



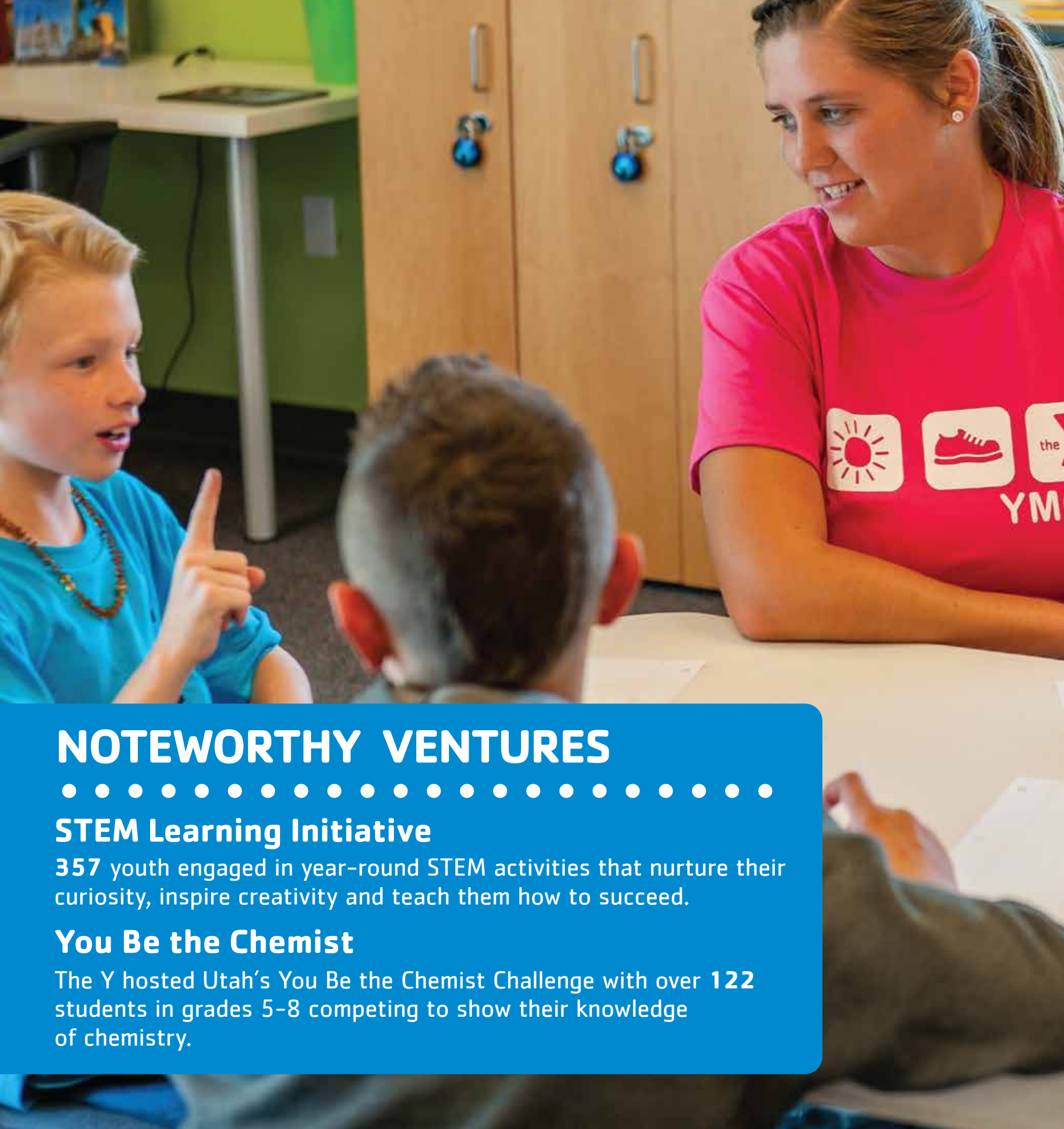
FOR YOUTH DEVELOPMENT®
FOR HEALTHY LIVING
FOR SOCIAL RESPONSIBILITY

Connecting
with 13,000
Individuals

The Y brings
people
together

**YMCA OF NORTHERN UTAH
2016 IMPACT REPORT**

The Y.™ For a better us.™



YOUTH DEVELOPMENT

The Y is working to build brighter futures for Utah's youth. The Y provides academic and enrichment programs to help youth perform better in school.



The Y's Impact 2016 HIGHLIGHTS

25 Afterschool Program Sites serving 1,741 youth
97% of parents said that the Y has helped their child gain new knowledge and skills.



6 Summer Day Camp Sites serving 543 youth
92% of parents said that the Y is an important community resource for nurturing the potential of every child.



6 Preschool Program Sites serving 294 youth
97% parents agree that the Y is an important community resource for nurturing the potential of every child.



1 Summer Overnight Camp serving 929 youth
97% of parents said that Camp helped their youth build confidence.



92% of parents say that the Y helps their children make new friends.

NOTEWORTHY VENTURES



STEM Learning Initiative

357 youth engaged in year-round STEM activities that nurture their curiosity, inspire creativity and teach them how to succeed.

You Be the Chemist

The Y hosted Utah's You Be the Chemist Challenge with over 122 students in grades 5-8 competing to show their knowledge of chemistry.

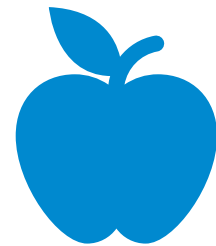
HEALTHY LIVING

NOTEWORTHY VENTURES

Afterschool Meal Program

1 in 5 of Utah's youth are unsure from where their next meal will come. The Y made a commitment to move from serving **snacks** to serving **meals** when the school day ends.

142,000



healthy meals and snacks served.

Diabetes Prevention Program

YMCA of Northern Utah is now part of the CDC-led National Diabetes Prevention Program helping 36 individuals reduce their risk of developing type II diabetes

2016 HIGHLIGHTS

Children engage in at least **30** minutes of physical activity for half-day programs and **60** minutes for full-day programs

95%

of parents say the Y is an important resource for improving the health and well-being of the community.



SOCIAL RESPONSIBILITY

NOTEWORTHY VENTURES

Healthy Kids Day

Y partners with Weber Morgan Health Department to merge Safe Kids Day and Healthy Kids Day events into one major community event reaching over **5,000** individuals.

2016 HIGHLIGHTS

The Y brings more communities together with opportunities for service learning, volunteerism and community partnerships

35+ Partners
93 Family and Community Events,
9,365 Event attendees
787 Volunteers giving over
8,534 Volunteer hours

94%

of parents say the Y provides the opportunity to give back and support others.

SERVING ALL

COMMUNITY DONATIONS ARE USED TO SUPPORT OUR FINANCIAL ASSISTANCE PROGRAM

TO ENSURE THAT NO ONE IS TURNED AWAY

OVER \$1.7 MILLION WAS GIVEN IN FINANCIAL ASSISTANCE

73% of families served reported being low or moderate income.

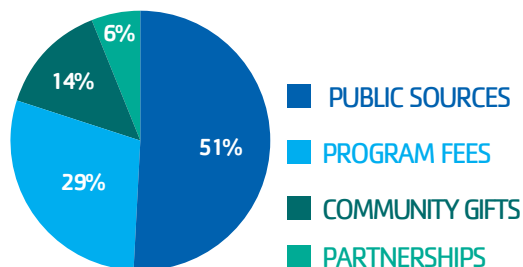
Average Financial Assistance provided by program

- SUMMER OVERNIGHT CAMP \$214 Per Camper
- SUMMER DAY CAMP \$593 Per Youth
- OUT OF SCHOOL TIME \$661 Per Youth
- EARLY CHILDHOOD EDUCATION \$2,408 Per Youth

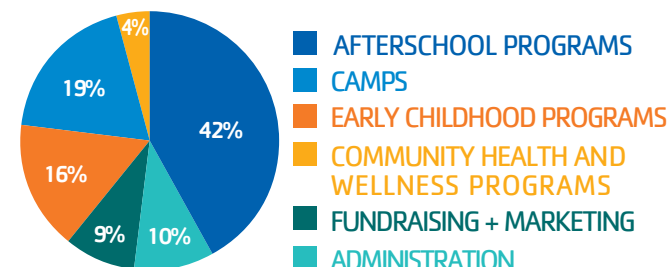
Total Number Receiving Financial Assistance: **2,497**

- **89%** families in Salt Lake County received financial assistance
- **31%** campers received financial assistance in Wasatch County
- **90%** families in Weber County received financial assistance

\$4.3M
INCOME



\$4M
EXPENSES



LOOKING AHEAD

The Y in Utah has a focus on its future to...

- Continue to invest in our communities to improve programs and enhance our impact.
- Engage ALL voices in our communities and embrace diversity.
- Engage with communities to expand proven programs where the Y is needed most.

STORY OF IMPACT

Oliver was enrolled in our Preschool Program this year and his mother made the Y staff aware of his need for an Individual Education Program for speech issues. He was not speaking words consistently or communicating verbally for his age level. Oliver's Preschool Program teacher worked closely with his IEP specialists implementing actions in and outside of the classroom to encourage speech progression. Through open-ended questions, his test scores have improved dramatically since the beginning of the school year, especially in language and comprehension. The Y has helped Oliver boost his learning skills and he is quickly catching up to other children in his class.





FOR YOUTH DEVELOPMENT®
FOR HEALTHY LIVING
FOR SOCIAL RESPONSIBILITY

THANKS TO OUR 2016 TOP SUPPORTERS

More than 560 individuals and 60 organizations support the Y.

KEY PARTNERS

4H – Utah State University
American Red Cross Utah Region
Boys and Girls Club Weber–Davis
Catholic Community Services
Church of Jesus Christ of Latter Day Saints
– Welfare Square Bishops Storehouse
DaVinci Academy of Science and the Arts
Family Counseling Services
Friends of Sight
Gear Up
Girls on the Run
Granite School District
GOAL Foundation
Heber–Kamas Ranger District
Head Start of Salt Lake City
Jr. Achievement
Boy Scouts of America
Ogden City Parks and Recreation
Ogden City Police Department
Ogden Fire Department

Girl Scouts of Utah
Ogden Nature Center
Ogden Preparatory Academy
Ogden School District
People Helping People
Prevent Child Abuse Utah
Salt Lake Community College
Treehouse Museum
United Way of Northern Utah
United Way of Salt Lake
Utah State Board of Education
Utah State University Extension
Wasatch Community Gardens
Weber Community Services
Ogden Weber Chamber of Commerce
Partners In Education
Weber Human Services
Weber State University
Weber–Morgan County Health Department
YMCA of the USA

MAJOR DONORS

Ace Disposal, Inc
Ally Bank
Amber and Bodee Gay
American Express Center for Community Development
Angela Chacon
Ann Nelson
Beehive Insurance Agency
Best Buy
Blaine and Shelly Burnett
Bruce and Tammy Schechinger
Bruce Foster
Castle Foundation
Chevron Products Company
City of Taylorsville
Craig & Connie Thatcher Foundation
Cross Charitable Foundation
Delta Air Lines
Dennis and Joan Mills
Department of Workforce Services
First Chair / Home & Community Inc.
GE Capital Solutions
George and Mary Hall
Gloria and Argan Johnson
GSBS Architects
Harris Financial
Henry W. & Leslie M. Eskuche Foundation
Herbert I. and Elsa B. Michael Foundation
Hogle Zoo
IntegraCore
Jeramy and Becky Lund
Jewel Lee Kenley
JoAnne L. Shrontz Family Foundation
John and Noel Davis
Karin Baumgartner
King Family Foundation
Kohls Department Stores, INC
Larry H. Miller Charities
Lawrence T & Janet T Dee Foundation
LDS Foundation
Lee and Leslie Archer

Mark and Kristen Adams
Mark and Lynn Hoffman–Brouse
Marriner S. Eccles Foundation
Masonic Foundation
Merrick Bank Corporation
Molina Healthcare
National Winter Sports Education Foundation
Ogden Regional Medical Center
Prime Alliance Bank
Ralph Nye Charitable Foundation
Raymond Family Foundation
Richard and Sarah West
Richard K. and Shirley S. Hemingway Foundation
Rochelle Krohn
Rocky Mountain Power Foundation
Ruth Eleanor Bamberger and John Ernest Bamberger Foundation
Scott and Pam Parkinson
SelectHealth
Sorenson Legacy Foundation
State of Utah
Steel Encounters Donor Advised Fund
Stephen G. & Susan E. Denkers Family Foundation
Steve and Lisa Sullivan
Stewart Education Foundation
Sundberg Building & Design, Inc.
Techbridge Girls
Transportation Alliance Bank
United Way of Northern Utah
US Bank Foundations – Grants Program
Utah Association of Financial Services
Utah Families Foundation
Wasatch Peaks Credit Union
WebBank
Weber State University
Wells Fargo Foundation
Westinghouse Electric
WEX Bank
YMCA of the USA
Zions Bank

LEARN MORE AT YMCAUTAH.ORG OR CALL 1-877-690-YMCA